



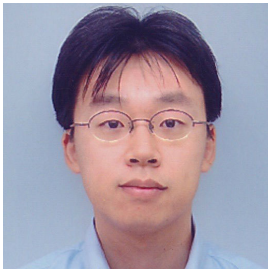
PROGRAM ON U.S.-JAPAN RELATIONS
Weatherhead Center FOR INTERNATIONAL AFFAIRS
HARVARD UNIVERSITY

2013-14 ASSOCIATES

HIRATA Yusuke

Sankei Shimbun

office 61 Kirkland Street, Room 302
e-mail yhirata@wcfia.harvard.edu
research project Preventive Measures for Child Abuse in the U.S. and Japan



Mr. Hirata earned his B.A. in International Studies from Hiroshima City University and M.A. in Political Science from Kobe University. At *Sankei Shimbun*, he has served as a Staff Writer in the City News Department of the Osaka Head Office, as well as in Hanshin and Kyoto Bureau. His articles at Sankei have reported on Toru Hashimoto, Osaka City's mayor, and victims of the Great East Japan Earthquake and the Japan Railways Fukuchiyama Line derauling accident. While at Harvard, Mr. Hirata will conduct research on measures to prevent child abuse in the U.S. and Japan.

HIROKAWA Koji

Ministry of Finance

office 61 Kirkland Street, Room 302
e-mail khirokawa@wcfia.harvard.edu
research project U.S. Fiscal Policy and Deficit in Comparative Perspective



Mr. Hirokawa received his Bachelor of Law from the University of Tokyo. The positions he has served at the Ministry of Finance include the Director General of the National Property Management Department, Shikoku Local Finance Bureau. He has also taught economics and financial law at Tohoku University. Most recently, he was a Policy Training Analyst for the National Institute of Public Administration, at the National Personnel Authority. Mr. Hirokawa's research at Harvard will examine U.S. fiscal policy and deficit in comparative perspective.

ITO Banri

Senshu University



office 61 Kirkland Street, Room 208
e-mail bito@wcfia.harvard.edu
research project Origins of Protectionist Trade Policy Preferences

Professor Ito received his B.A., M.A., and Ph.D. in Economics from Keio University. His research focuses on international trade and investment; trade, innovation and intellectual property rights; and trade protection and political economy. Professor Ito's articles have been published in *The World Economy*, *Economic Inquiry*, *Review of International Economics*, *Journal of the Japanese and International Economies*, *China Economic Review*, and in other journals and edited volumes. He is also the co-author of *Global Innovations* (in Japanese, Keio University Press, 2011). While at Harvard, his research project will examine the origins of protectionist policy preferences.

KAGENISHI Haruko

Asahi Shimbun



office 61 Kirkland Street, Room 302
e-mail hkagenishi@wcfia.harvard.edu
research project Sustainability of Healthcare Systems in Japan and the U.S.

Ms. Kagenishi earned her B.A. in Social Sciences from Tsuru University. As a Staff Writer at *Asahi Shimbun*, she has reported from the Chiba and Yamanashi Bureaus. During the past decade, she has written articles on Japan's domestic politics and social security at the Tokyo Head Office. Most recently, she published an article which examined the impact of inter-party competition on Japan's pension reform. Ms. Kagenishi's research at Harvard will examine the sustainability of healthcare systems in Japan and the U.S.

KONO Etsuo

Yomiuri Shimbun



office 61 Kirkland Street, Room 301
e-mail ekono@wcfia.harvard.edu
research project Monetary Policy, Central Banking, and Financial Sector Reform

Mr. Kono received his B.A. and M.A. in Economics from Waseda University. At *Yomiuri*, he has been a Staff Writer in the Economic News Department at the Tokyo Head Office, and has also served in the Kanazawa and Yokohama Bureaus. His articles have covered international finance, Asian economies, development of the electronics industry, tax policy, and social welfare in an aging society. Mr. Kono's research at Harvard will examine monetary policy, central banking, and financial sector reform.

MIMAKI Seiko

Waseda University



office 61 Kirkland Street, Room 208
e-mail smimaki@wcfia.harvard.edu
research project U.S., Japan, and Transpacific Regional Cooperation in Historical Perspective

Dr. Mimaki is a Postdoctoral Research Fellow of the Japan Society for the Promotion of Science (JSPS) and an Affiliated Researcher at Waseda University. She received her B.A., M.A., and Ph.D. from the Department of Area Studies, the University of Tokyo. Her research examines U.S. initiatives to develop new norms for international and regional peace in the interwar period. She is currently completing a book manuscript on U.S. efforts to outlaw international wars in the interwar period. While at Harvard, Dr. Mimaki's research project will examine the history of U.S. and Japanese initiatives in creating a cooperative framework in the Asia-Pacific region.

MIYAKAWA Daisuke

Development Bank of Japan



office 61 Kirkland Street, Room 307
e-mail dmiyakawa@wcfia.harvard.edu
research project Bond Markets and Monetary Policy in the U.S. and Japan

Dr. Miyakawa received his B.A. in Economics from Waseda University, and M.A., C.Phil., and Ph.D in Economics from University of California, Los Angeles. His research interests include financial economics, financial intermediation, corporate finance, and asset pricing. His articles have been published in *Economic Review*, *Seoul Journal of Economics*, *Journal of Market Economy*, and edited volumes. Most recently, he served as an Associate Senior Economist at the Research Institute for Capital Formation (RICF), the Development Bank of Japan. He has also taught at Waseda University and National Graduate Institute for Policy Studies (GRIPS). Dr. Miyakawa's research at Harvard will examine bond markets and monetary policy in the U.S. and Japan.

OGIHARA Takehiko

Ministry of Foreign Affairs



office 61 Kirkland Street, Room 307
e-mail togihara@wcfia.harvard.edu
research project Japan-U.S.-China Triangle in the Asia-Pacific Region

Mr. Ogihara earned his B.A. in International Studies from University of Tokyo. During 2011-13, he served as an Attaché at the Embassy of Japan in China and also studied Chinese and international relations at Xiamen University in the Fujian Province. As a diplomatic officer of Japan's Ministry of Foreign Affairs, he has coordinated the Japan-China-Korea trilateral summits, as well as the ASEAN and East Asia Summit (EAS) meetings. While at Harvard, Mr. Ogihara will conduct research on the Japan-U.S.-China triangle in the Asia-Pacific region.

SAITO Hiro

University of Hawai'i at Mānoa



office 61 Kirkland Street, Room 203
e-mail hsaito@wcfia.harvard.edu
research project Science and Democracy after the Fukushima Disaster

Professor Saito is an Assistant Professor of Sociology at the University of Hawai'i at Mānoa. He received his B.A. in Sociology from International Christian University, and Ph.D. in Sociology from the University of Michigan. His research interests include collective memory, education, cosmopolitanism, and science and democracy. Professor Saito's articles have appeared in *Sociological Theory*, *Social Science Japan Journal*, and in edited volumes. He recently completed a book manuscript, titled "The History Problem: Nationalism, Cosmopolitanism, and Reconciliation in East Asia." In the fall semester, Professor Saito will teach Sociology 163, "Science, Technology, and Democracy."

SAKOTA Hideharu

Ministry of Economy, Trade and Industry



office 61 Kirkland Street, Room 302
e-mail hsakota@wcfia.harvard.edu
research project Role of the Government in the Energy Sector

Mr. Sakota earned his B.A. in Economics from the University of Tokyo. His most recent position at METI was Deputy Director of the Electricity Market Division, Electricity and Gas Industry Department, at the Agency for Natural Resources and Energy. He has also served in the Automobile Division in the Manufacturing Industries Bureau; and the Petroleum Refining and Reserve Division, Natural Resources and Fuel Department, in the Agency for Natural Resources and Energy. Mr. Sakota's research at Harvard will examine the role of the government in the energy sector.

Frank SCHWARTZ

office 61 Kirkland Street, Room 301
e-mail frank.schwartz.80@gmail.com
research project The Globalization of Higher Education in Japan



Dr. Schwartz received his B.A. in Social Studies and Ph.D. in Political Science from Harvard University. He is the author of *Advice and Consent: The Politics of Consultation in Japan* (Cambridge UP, 1998) and co-editor (with Susan Pharr) of *The State of Civil Society in Japan* (Cambridge UP, 2003). His previous positions include Associate Director of the Program on U.S.-Japan Relations at Harvard, and Assistant Director of the U.S.-Japan Program at Japan Society in New York City. Most recently, he served as Special Assistant to the President of Montclair State University. His research during the current academic year will focus on the globalization of higher education in Japan.

SEO Atsuko

Tokyo Gas Co., Ltd.



office 61 Kirkland Street, Room 303
e-mail ase0@wcfia.harvard.edu
research project Energy Strategies and Policies of the U.S. and Japan

Ms. Seo earned her B.S. and M.S. in Applied Chemistry from Sophia University. At Tokyo Gas, her most recent position was Senior Manager, the Technology Research Institute, in the Fundamental Technology Department. She is the author or co-author of papers on combustion technology, natural gas quality management, desulfurization catalyst of fuel cells, and other topics. She also holds several patents in Japan, including those related to the effective usage of exhausted heat from cogeneration systems. Ms. Seo's research at Harvard will investigate the energy strategies and policies of the U.S. and Japan.

TAKIZAWA Miho

Toyo University



office 61 Kirkland Street, Room 301
e-mail mtakizawa@wcfia.harvard.edu
research project Intangible Assets and Economic Growth in the U.S. and Japan

Professor Takizawa received her B.A. (*summa cum laude*) in Economics from Gakushuin University, and Ph.D. in Economics from Hitotsubashi University. Her research interests include mergers and acquisitions, productivity, and firm-level performance. She is the co-author of *Macroeconomics* (in Japanese, Shinseisha, 2011), and author of articles in *NBER Working Paper Series*, *Japan and the World Economy*, *Seoul Journal of Economics*, *RIETI Discussion Paper Series*, and other journals and edited volumes. While at Harvard, Professor Takizawa's research project will examine the impact of intangible assets on economic growth in the U.S. and Japan.

TERADA Shinichiro

KDDI Corporation

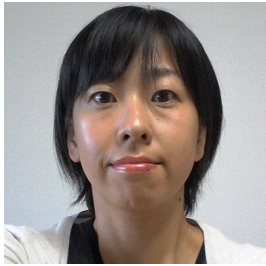


office 61 Kirkland Street, Room 307
e-mail sterada@wcfia.harvard.edu
research project Business Ecosystems of the Mobile Industry in the U.S. and Japan

Mr. Terada earned his B.A. in Economics from Keio University and M.B.A. from University of Chicago, and is a Ph.D. candidate in the Department of Technology Management for Innovation, Graduate School of Engineering, at the University of Tokyo. He has served as Head of Management Group at KDDI Research Institute Inc., Director of KCOM Inc., and President of KDDI Creative Inc. He has presented his research findings at the International Telecommunications Society, Japan Society of Information and Communication Research, Japan Society for Science Policy and Research Management, and other conferences. Mr. Terada's research at Harvard will investigate the business ecosystems of the mobile industry in the U.S. and Japan.

YAMADA Rie

Asahi Shimbun



office 61 Kirkland Street, Room 303
e-mail ryamada@wcfia.harvard.edu
research project Social and Economic Impact of the Decommissioning of Nuclear Power Plants

Ms. Yamada earned her Bachelor of Law from Rikkyo University, and M.A. in Sociology from Jawaharlal Nehru University. As a Staff Writer at *Asahi Shimbun*, she has served in the Fukui General Bureau, Osaka Head Office, Hokkaido Branch Office, and Morioka General Bureau. Her articles have covered nuclear power plants, global environmental issues, the G-8 Toyako summit, and prefectural and national elections. As a Fulbright Visiting Scholar during the 2013-14 academic year, Ms. Yamada will investigate the social and economic impact of the decommissioning of nuclear power plants in Japan.

YANAGI Takeshi

Hitotsubashi University

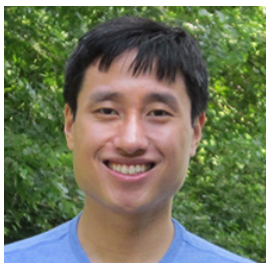


office 61 Kirkland Street, Room 301
e-mail tyanagi@wcfia.harvard.edu
research project Efficiency Defense in Antitrust Law

He received his LL.B. and LL.M. from Waseda University and his J.D. and LL.D. from Hitotsubashi University. He has conducted extensive research on antitrust law of U.S., EU, and Japan. His recent publications have appeared in *Jurist* and *Hitotsubashi Journal of Law and International Studies*. He also passed the national bar examination of Japan and served as an Attorney-at-Law at major Japanese law firms. During the 2013-14 academic year, Dr. Yanagi's research at Harvard examine the efficiency defense in antitrust law.

Timothy YANG

Columbia University



office 61 Kirkland Street, Room 301
e-mail tyang@wcfia.harvard.edu
research project Global Capitalism, Empire, and Medicine in Modern Japan

Dr. Yang will be an Assistant Professor of History at Pacific University in fall 2014. He received his A.B. in History and Japanese (*summa cum laude*) from Dartmouth College, and Ph.D. in History from Columbia University. His dissertation, "Market, Medicine, and Empire: Hoshi Pharmaceuticals in the Interwar Years," examined the connections between global capitalism, empire, and medicine in modern Japan. Dr. Yang's article has appeared in *East Asian Science, Technology, and Society*. While at Harvard, Dr. Yang plans to complete a book manuscript based on his dissertation.